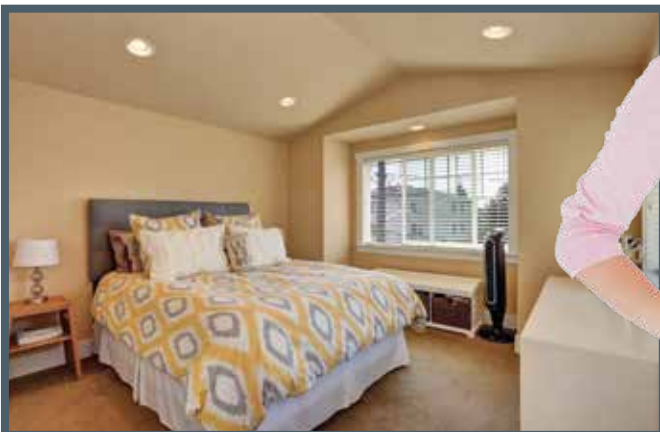


# OPPORTUNITY

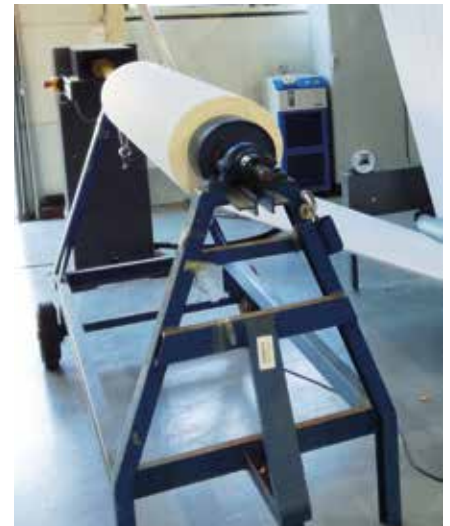
As a golden opportunity we are pleased to offer one  
**COLARIS.32-1800 PIGMENT PRINT LINE**



**Zimmer**  
AUSTRIA

## TECHNICAL DATA:

Working width:	<b>1800 mm</b>
Maximum fabric width:	<b>1850 mm</b>
Ink class:	<b>Pigment inks for max. variety of textile substrates</b>
Color groups:	<b>7 but can be extended to 8</b>
Color set-up:	<b>6 process colors with double black Could be extended to 7 and 2 black positions or double CMYK</b>
Printheads installed:	<b>4 per color group total 28 (extendable to 4x8 at a total of 32)</b>
Printhead model:	<b>FUJIFILM Dimatix Starfire™ GS-1024 SA</b>
Nominal capacity:	<b>laid out for up to max. 245 m<sup>2</sup>/h equal into 2,26 m/min at an effective printing width of 185 cm, based on 7 color setup at 400/800 dpi, 2 pass printing</b>
Production output:	<b>subject to print design, color application amount required and maintenance condition of the print line</b>
<b>All capacity parameters are subject to a tolerance of ± 10%</b>	
Utilities required:	<b>6 Nm<sup>3</sup> natural gas at 70 mbar</b>
Compressed air:	<b>Approx. 200 NI/h, dry and clean at 6 bar</b>
Water:	<b>Soft water or RO water at minimum 3,5 bar</b>
Printer environment:	<b>Climatized room with 22 °C ± 1 °C humidity 60% ± 10%</b>
Space required:	<b>L=9.000 / W= 8.400 / H=4.000 mm</b>



Centric driven A-frame unwinder with speed synchronization to the print line



Small batch (up to 40 cm diameter) take-up system, with pneumatic expander shaft for 3 inch (75 mm) diameter cardboard rolls







COLARIS inkjet printer incl. base frame, print blanket with drive and rotary encoder, blanket position control by a linear encoder, glue applicator for sticky belt. Electronic control and electrical appliance, computer workstation and touch screen as a human-machine interface, incl. print software.



Fabric feeding and positioning system with E&L lath guiding roller, with pendulum for speed synchronization with the printer.



Loop control system for synchronization of printer and dryer.



Crank gear plater for delivery of printed substrate onto a pallet or into a trolley.



One chamber high capacity hot air nozzle dryer, gas heated with single fabric pass through the dryer.

## First in Quality | First in Service

All machines and components from ZIMMER AUSTRIA are strictly inspected and tested before shipping to customers to ensure efficient installation and best performance with 100 % satisfaction.

**COLARIS** on-site customer support is guaranteed by service partners and ZIMMER AUSTRIA engineers and technologists.

This setup guarantees a short response time on a service call from a customer.

The described equipment is inspected and partially overhauled by ZIMMER AUSTRIA. We offer the equipment in confidence of being in a good condition. The print line comes with a warranty of 6 months on any replaced part but without liability for parts not being replaced at the time of overhaul. The print line is offered on an as it is base. The machinery has been dismantled but can be inspected prior to purchase. Offers are made on a first come first serve condition.



**TEXTILE  
PRINTING**



**FLOOR  
COVERINGS**



**NARROW  
FABRICS**



**DIGITAL  
FUNCTIONALIZATION**



**SPECIALITIES**

## INNOVATION | QUALITY | SERVICE

**ZIMMER MASCHINENBAU GMBH**  
DIGITAL PRINTING SYSTEMS

Eibergstrasse 2-8  
6330 Kufstein | AUSTRIA  
+43 (5372) 64893 -0  
info@zimmer-austria.com  
[www.zimmer-austria.com](http://www.zimmer-austria.com)



J. ZIMMER Maschinenbau GmbH, Kufstein reserves the right of technical and design modification of the equipment described within this brochure at any time without prior notice. This leaflet is for informative purpose only.

**Zimmer**  
AUSTRIA